

NVECloud

Quick Guide

The screenshot shows the NVECloud interface. On the left, there is a sidebar with a 'Zones' list. The main area displays a table of zone data for 'Part 2 - 1. Sal'. The table includes columns for Zone, Status, Error, Temp. set (°C), Temp (°C), CO2 (PPM), Humidity (%), Heating (%), and Ventilator (%).

Zone	Status	Error	Temp. set (°C)	Temp (°C)	CO2 (PPM)	Humidity (%)	Heating (%)	Ventilator (%)
Zone 201 - R&D West	Demand driven pulse ventilation	OK	23	21.8	860	35	34	-
Zone 203 - Lounge	Demand driven pulse ventilation	OK	23	22.1	740	39	0	-
Zone 205 - PM West	Demand driven pulse ventilation	OK	23	22.1	850	40	18	0
Zone 206 - Finance	Demand driven pulse ventilation	OK	23	22	740	36	26	-
Zone 207 - Waiting area	Demand driven pulse ventilation	OK	22	20.9	700	44	24	-
Zone 208 - CEO, Erik Boyter	Demand driven pulse ventilation	OK	23	20.5	400	44	39	-
Zone 209 - SFO - SOS	Demand driven pulse ventilation	OK	23	22.1	420	41	10	-
Zone 210 - Head of PM - NRS	Automatic ventilation off (only hand operation)	OK	23	22.2	680	41	3	-
Zone 211 - Meeting 4	Demand driven pulse ventilation	OK	23	21.9	700	35	21	-
Zone 212 - Finance controller - MOH	Demand driven pulse ventilation	OK	23	22	720	41	18	-
Zone 213 - Supply & Logistic - KRa	Demand driven pulse ventilation	OK	23	22	600	42	16	-
Zone 214 - PM east	Demand driven pulse ventilation	OK	23	22.1	810	40	6	0

DK +45 4567 0300
 DE +49 40 87 409 -560 Vertrieb / - 484 Technik
 UK +44 1536 614 070
 CH +41 62 289 22 22
 NO +47 33 99 71 00
 US +1 650 360 5414 West Coast / +1 215 699 9292 East Coast
 Other market +45 4567 0300

info.dk@windowmaster.com
 info.de@windowmaster.com
 info.uk@windowmaster.com
 info.ch@windowmaster.com
 info.no@windowmaster.com
 info.us@windowmaster.com
 info.dk@windowmaster.com

www.windowmaster.com

Table of Contents

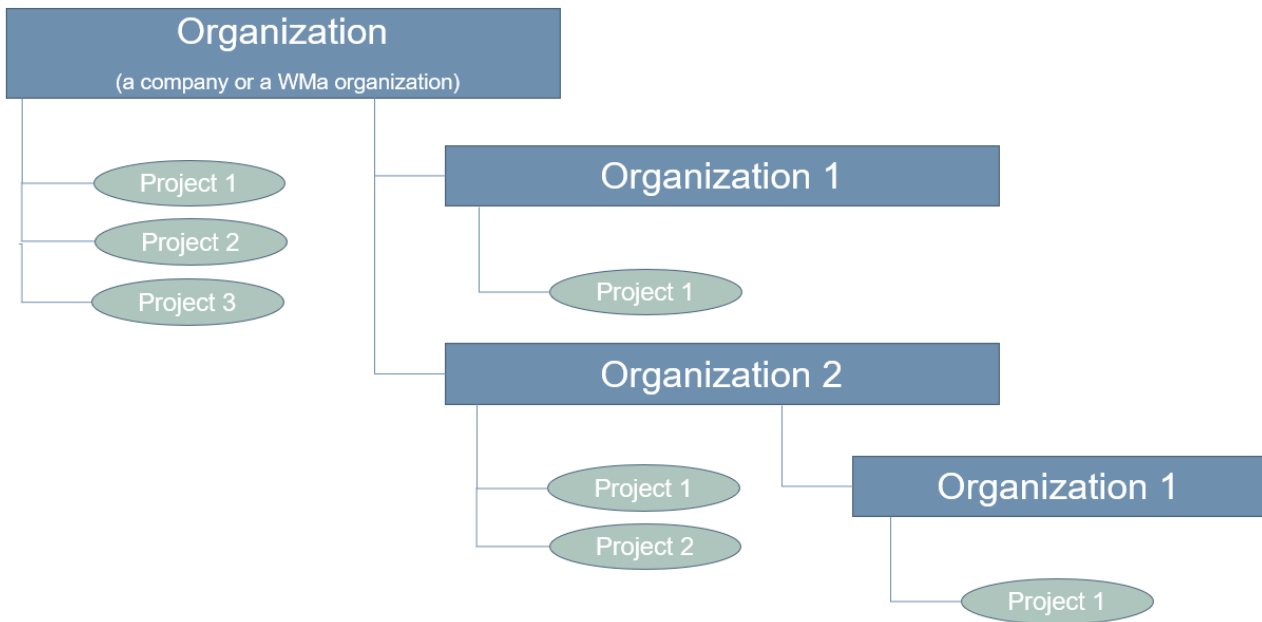
1. General.....	3
2. Dashboard.....	4
2.1 The Overview module	5
2.1.1 Creating a new Organization or new Project	5
2.1.2 Project	6
2.1.3 Building the NVECloud project	7
2.2 The Graph module	8
2.2.1 Exporting historical data	9
2.3 The Users module.....	10
2.3.1 User accounts	10
2.3.2 Assigning permissions	12

1. General

This document describes how to work with NVECloud to create and administrate NV Embedded® (NVE) systems.

The document assumes that the reader has a good knowledge of WindowMaster control units and good understanding of the WindowMaster NV Embedded® system.

The NVECloud is a web-based application designed for easy creation and administration of NVE systems. The application structure is hierarchical with Organizations and Projects. An Organization is a WMA organization or a company partner of WindowMaster. An Organization refers to it and or NVE Projects referring to it.



NVECloud has three User roles.

An Organization Manager

- Manages its organization(s) and can manage any of the sub organizations and Projects, referring to its organization(s).
- Creates new Organizations and creates new Organization Managers.
- Creates new Projects and creates new Facility Managers.
- Manages projects as a Facility Manager.

A Facility Manager

- Manages one or more Projects.
- Creates new Facility Managers.
- Creates new App users.

An App User

- Has permission to use the "NV E in the building(s).

App to see the status of specific zones and operate specific windows

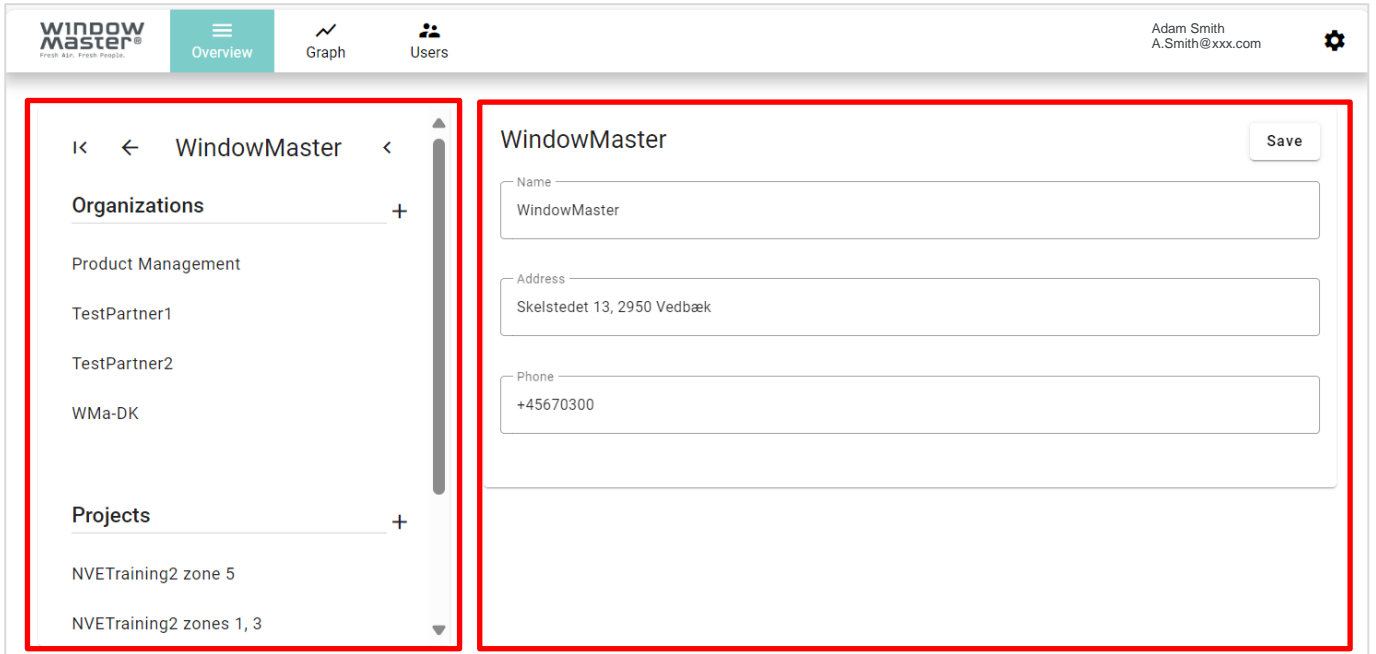
To access the NVECloud Dashboard you must be either an Organization Manager or a Facility Manager. Navigate to: <https://nvecloud.windowmaster.com> and log on with the credentials you have received.

Note that the application is designed to run in either Microsoft Edge or Google Chrome. The application can also run on IOS or Android tablets. The application is not tested with other Internet browsers.

2. Dashboard

The Dashboard is the User Interface to NVECloud and to NVE systems. The Dashboard includes 3 modules | Overview, Graph and Users | and a settings page.

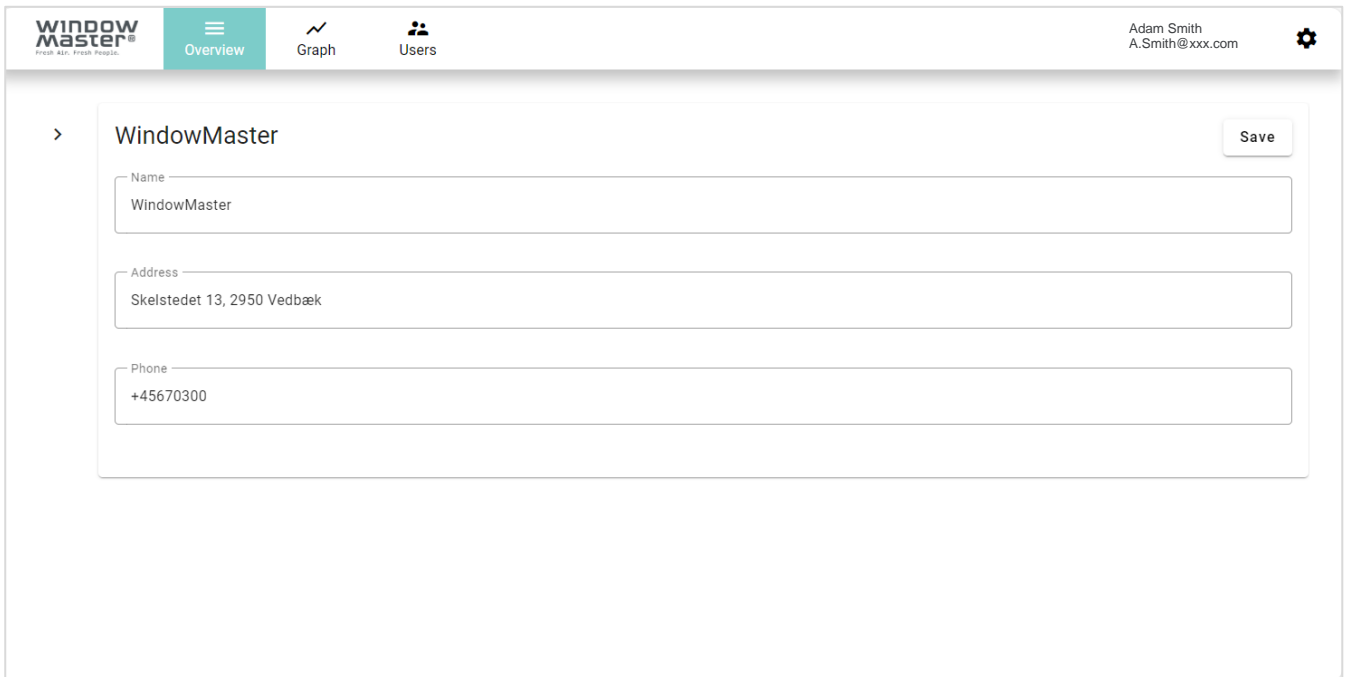
On the left side of the screen, the modules have a navigation frame, to navigate through the Organization/Project structure. On the right side of the screen, the modules have a data frame to display the information related to the selected Organization/Project, data points, or users.



Navigation frame

Data frame

The navigation frame can be collapsed to the left by pressing the < button on the top right corner of the navigation frame, to make more room to the data frame.

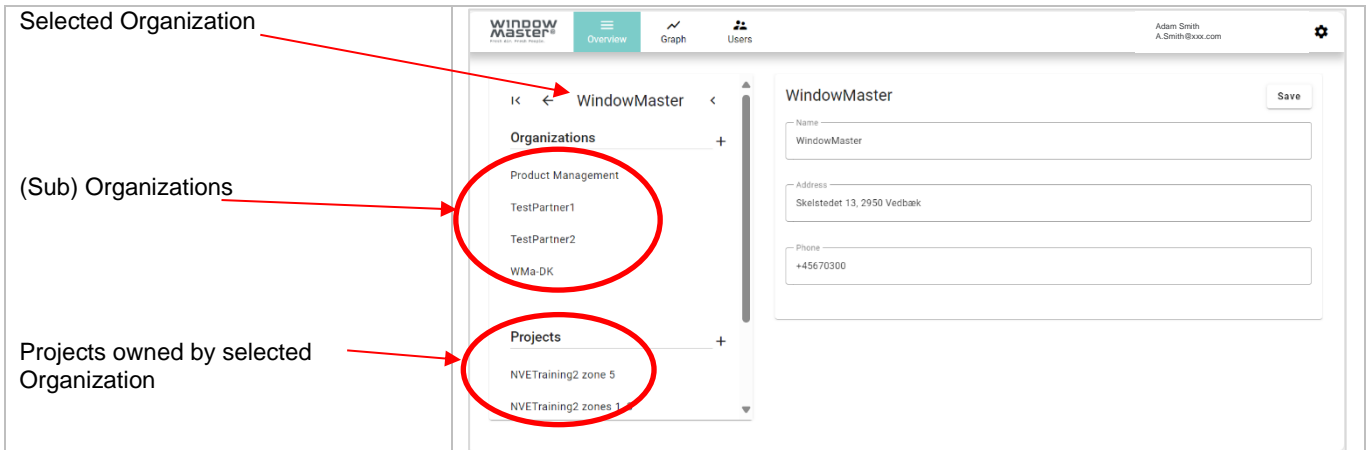


2.1 The Overview module



The Overview module gives an overview of the (sub) Organizations and the projects belonging to a given Organization. It is also used to create new Organizations and new projects.

On the top of the navigation frame, is the name of the selected Organization, under the **Organizations** is a list of the sub-Organizations, this current Organization has, and under the **Projects** is a list of the projects, this current Organization has.



When selecting an Organization, you make it the current Organization and you get the overview of its (sub) Organizations and projects. When selecting a Project, you get an overview of that specific project.

In the data frame, you can see the data of the selected Organization/Project.

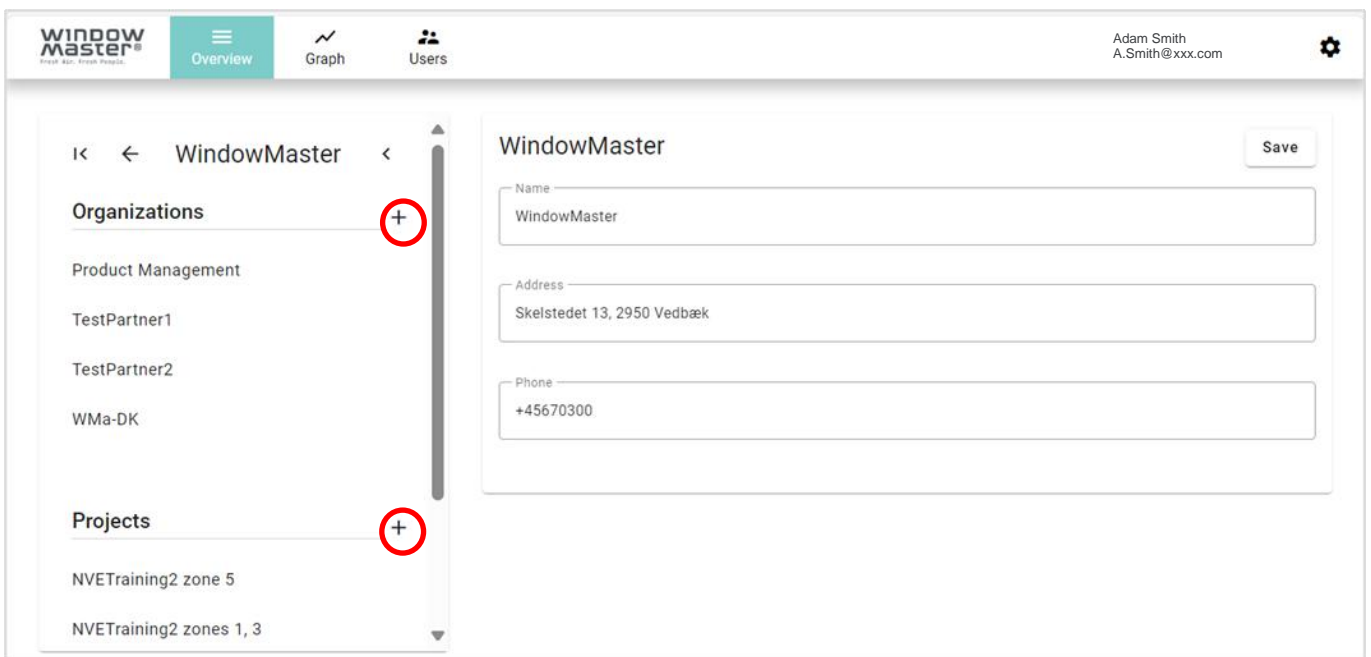
When you log on to the Dashboard you are always at the top level of your Organizations/Projects level, depending on your credentials.

2.1.1 Creating a new Organization or new Project

To create a new Organization

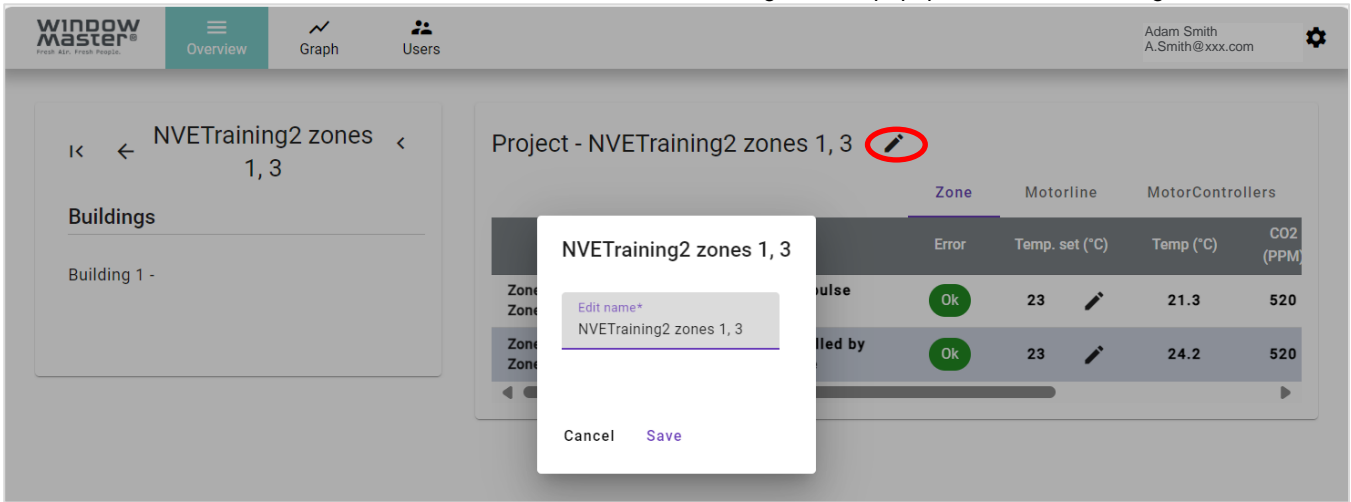
M N

Organizations list header.
Projects list header



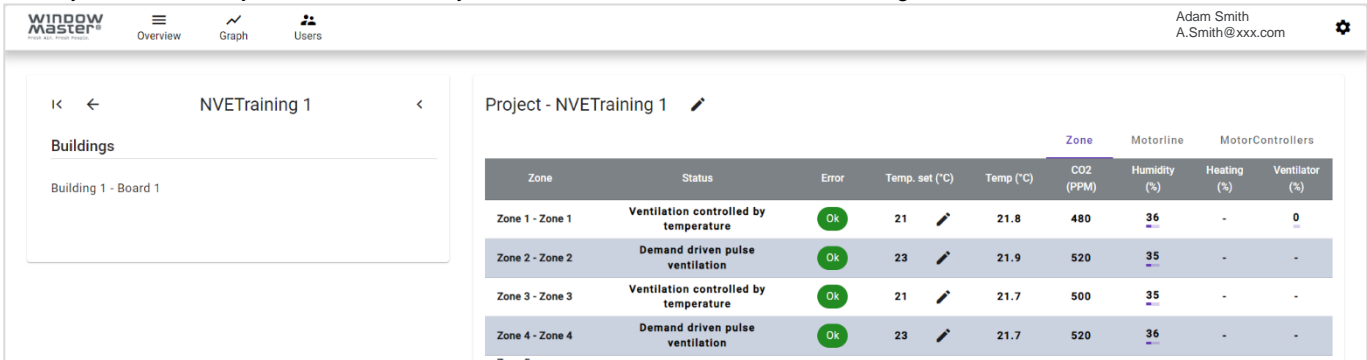
Enter the required information and press Save.

You can always edit the Project or Organization information, by editing the information and saving it again. To edit a project name, M N frame, make the changes in the popup window and save again.

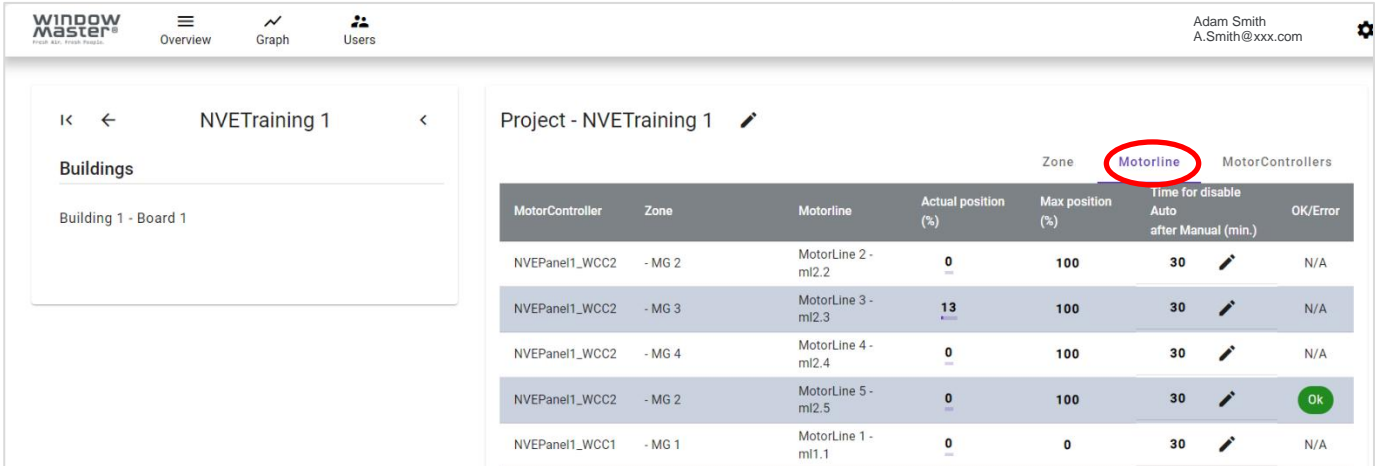


2.1.2 Project

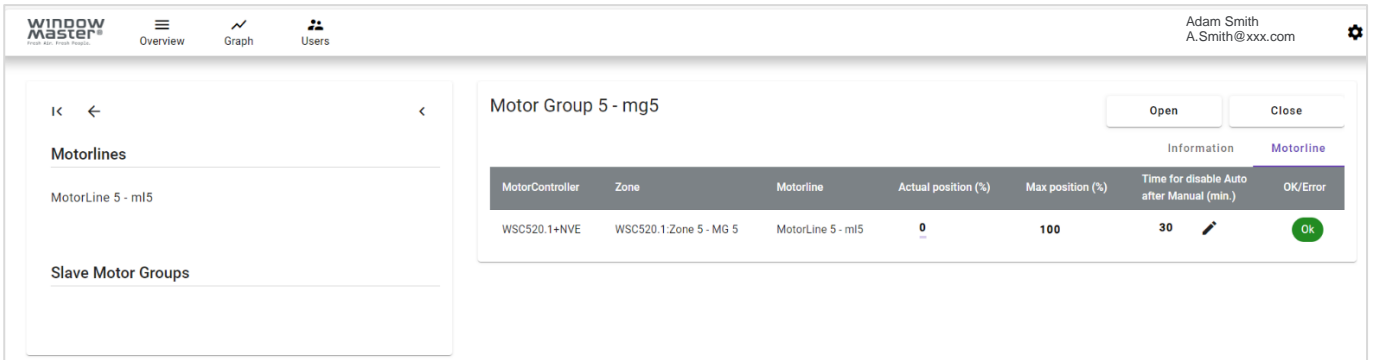
When you select a Project on the left side, you see an overview of its zones on the right side.



to see an overview of all the motor lines in the project.



On the left side you can navigate in the Project structure from Building to Part, to Zone, to MotorController, to Motor group, and to Motor line.

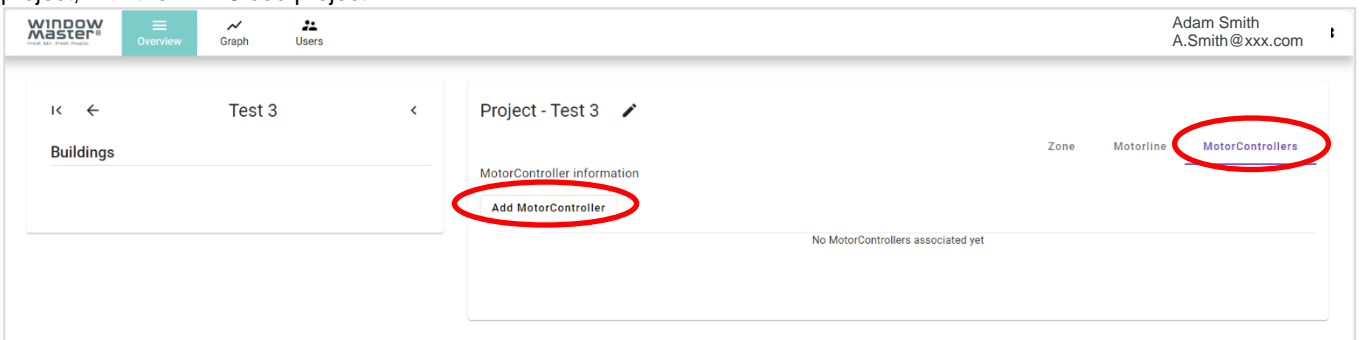


Note that some of the data points/information associated with different levels of a project, will be implemented in coming updates of the Dashboard.

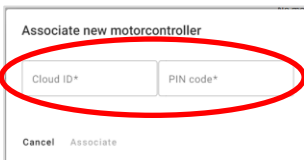
2.1.3 Building the NVECloud project

The NVECloud project is built from the project structure data stored on the physical MotorControllers that run the NVE system. When you start a new project, the project navigation frame, the zones and motor lines overviews are all empty.

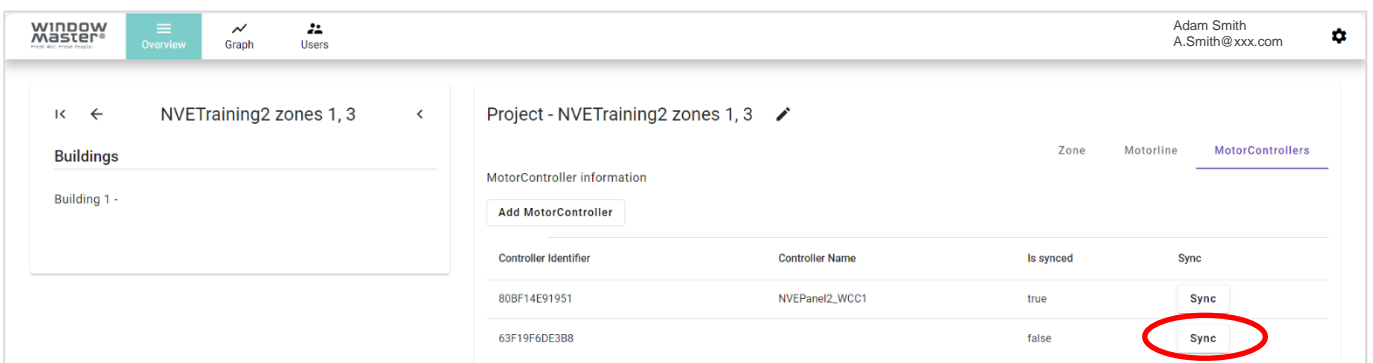
Start a new project, with the NVECloud project.



To associate a MotorController, you must supply the Cloud ID and the PIN code of the MotorController.

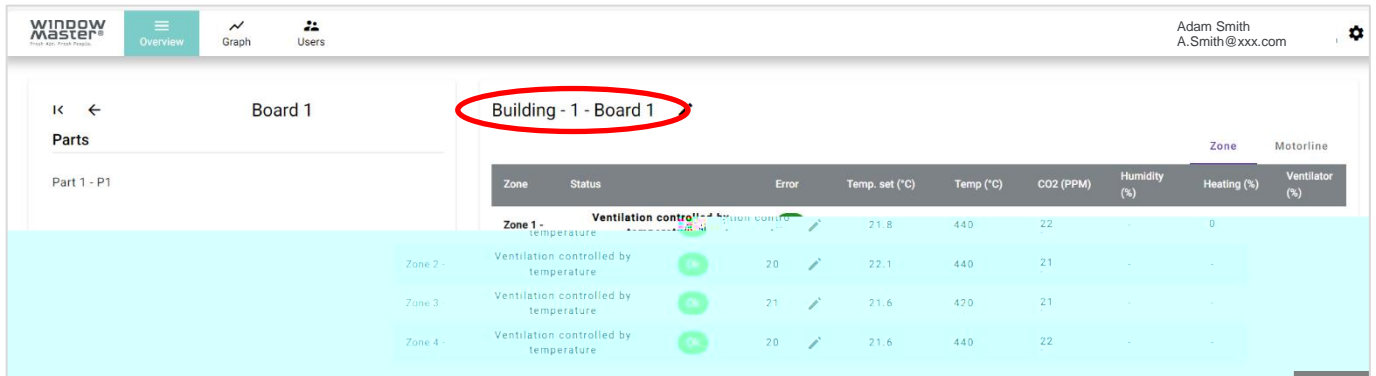


After associating the MotorController, the MotorControllers that actually run NV-Controllers. The Sync function copies the project structure data (Building, Part, Zone, Motor groups, Motor lines) from the MotorController and creates the structure in the NVECloud project. Any MotorController running Slave Motor groups will also automatically be synced, when you sync the MotorController running the Master Motor groups. In the illustration below, the first MotorController is synced, the second is not synced yet.



Now select

M N M N



2.2 The Graph module

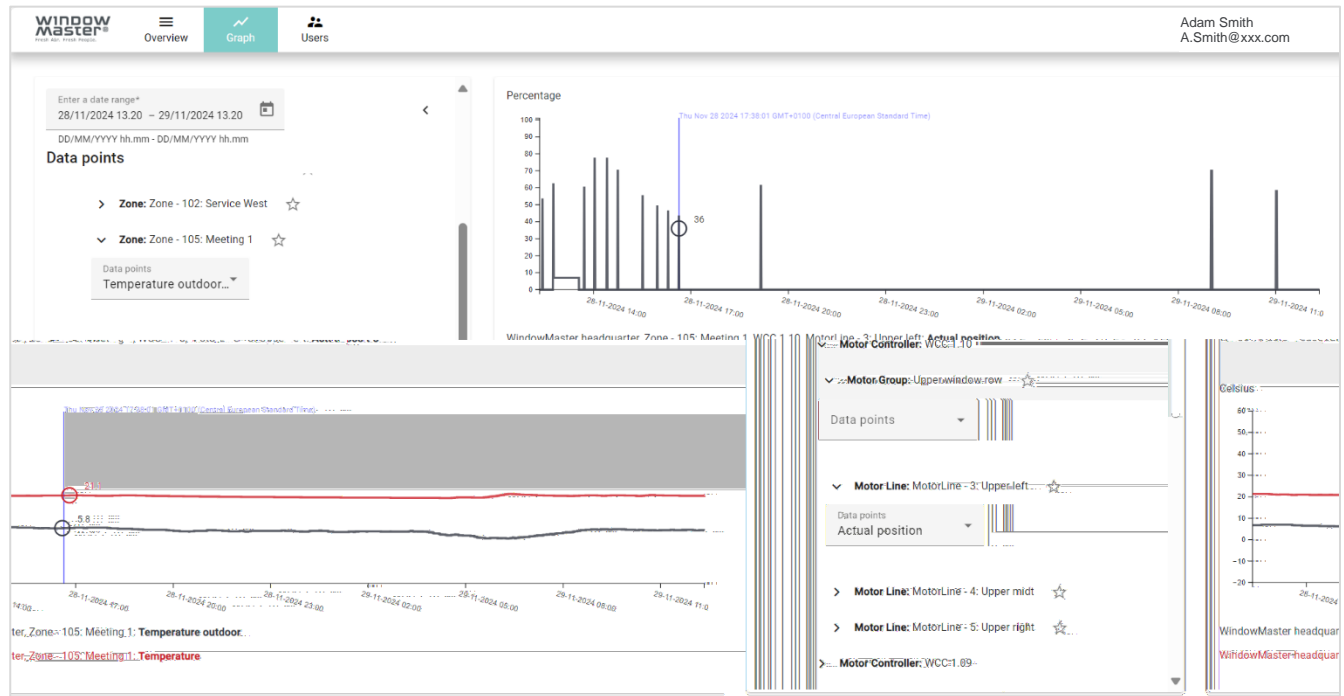


The Graph module gives access to projects historical data, continuously logged in the NVECloud application. The historical data can be used to analyse and document the performance of NV Embedded® systems and to help troubleshoot eventual errors and functional issues.

When you have selected the Graph module, you can navigate and select specific data points to look at, on the left side of the screen, and you will see the diagrams with the selected data points on the right side of the screen.

Inflate the Zone or the Motor line, you navigated to and select the data point from the drop-down menu.

Note that not all the data points, available in the drop-down menu are implemented yet, and MotorController and Motor group data points will be implemented at a later time.

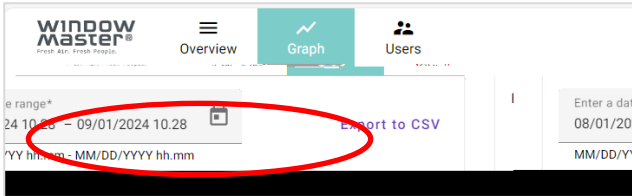


When the same data point e.g. temperature is selected for several zones, all the different temperatures will be shown in one graph.

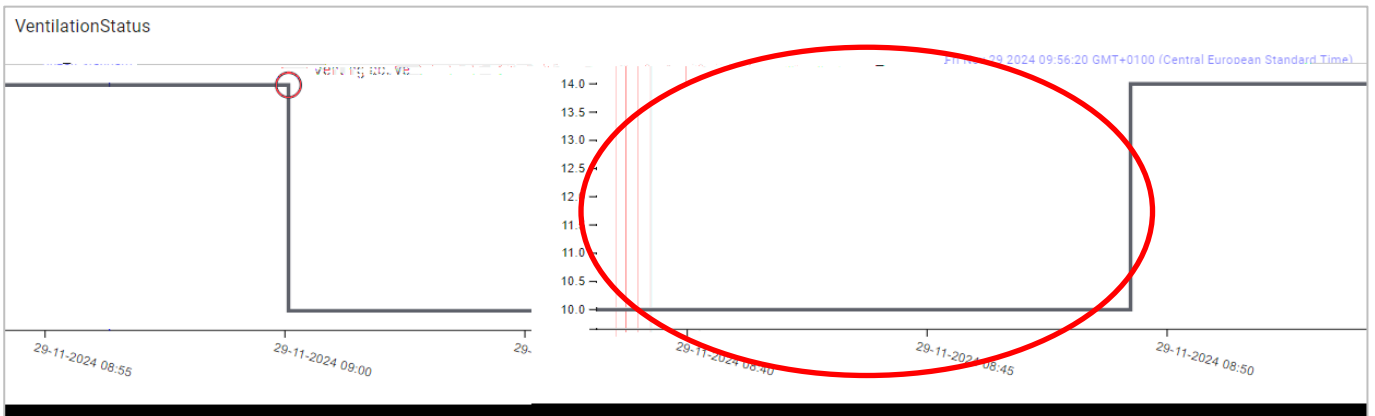
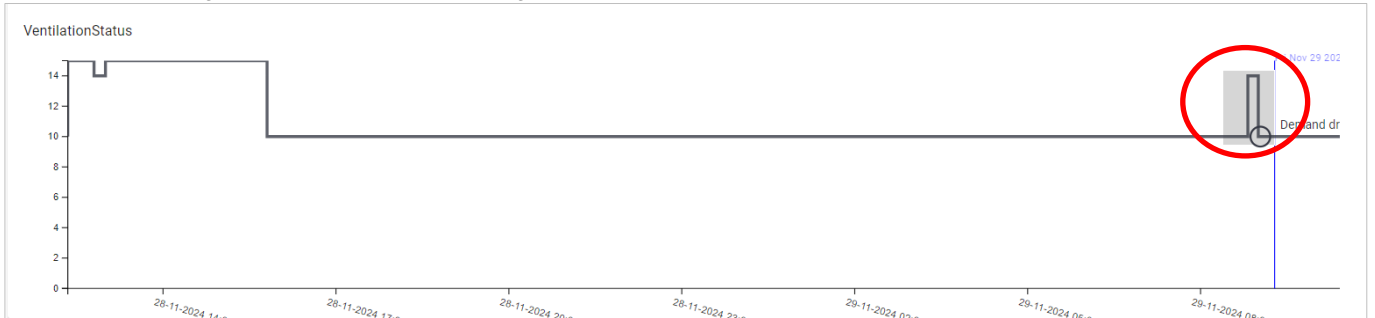
You can mark zones and Motor lines as favourites to gain easy access to them without the need to navigate to them through the entire data point selection structure.

The time interval of the extracted logged data is the last 24 hours, but you can specify the time interval you are interested in, in the upper left corner of the screen. After you open the calendar object to select the date interval, the first click on a date defines the start date and the second click defines the end date. To change the time of the day you must manually edit the start and end times on screen.

Time interval is always specified and shown, in the local time of the project so when you specify, for example a 8:00 | 11:00 N | 11:00 regardless of whether the project is in Germany or in California, and regardless of whether you are sitting in Copenhagen or in North Wales, Pennsylvania.

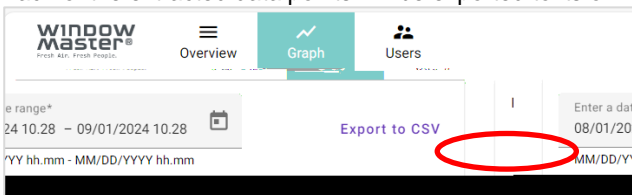


Use the mouse to mark an area on the displayed graph to zoom-in, in both time (the X-axis) and values (the Y-axis), to look at a smaller area of the graph in more details. Double click in the graph area to return to the original scale.



2.2.1 Exporting historical data

Each of the extracted data points will be exported to its own separate file.



2.3 The Users module



The Users module functionality is to create and manage User accounts, and to assign permissions for App users. NVECloud has three User roles.

An Organization Manager

- Manages its organization(s) and can manage any of the sub organizations and Projects, referring to its organization(s).
- Creates new Organizations and creates new Organization Managers.
- Creates new Projects and creates new Facility Managers.
- Manages projects as a Facility Manager.

A Facility Manager

- Manages one or more Projects.
- Creates new Facility Managers.
- Creates new App users.

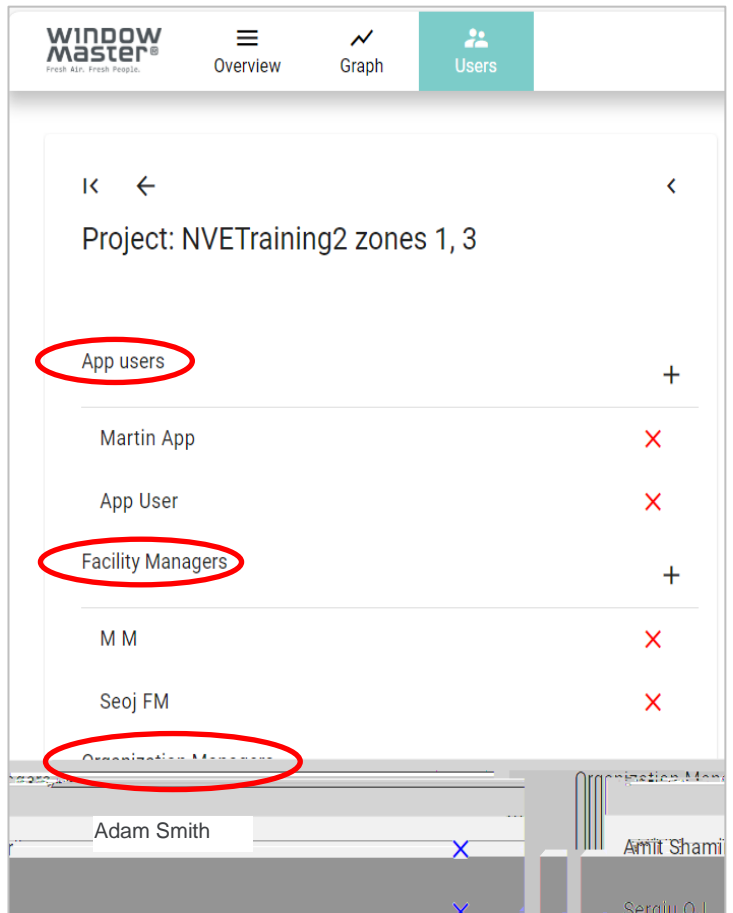
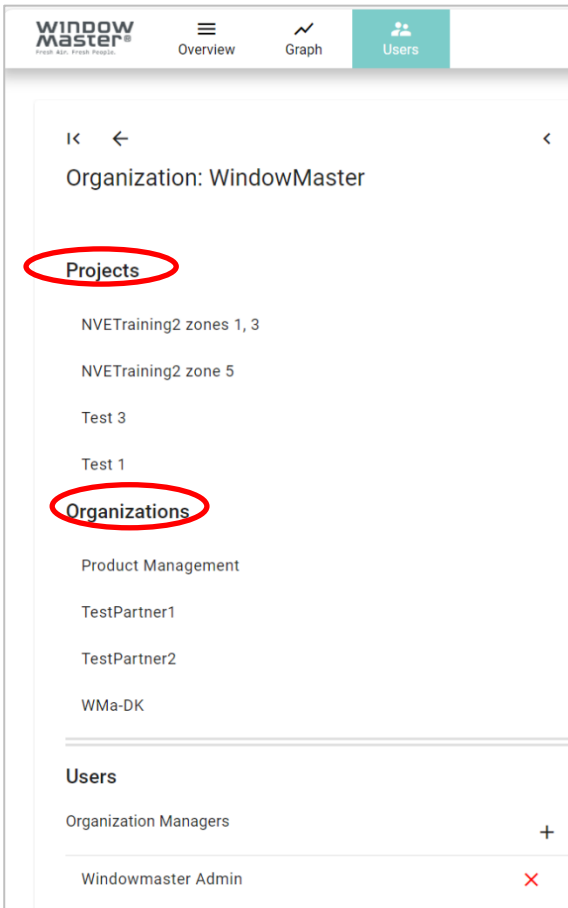
An App User

- Has permission to use the "NV E

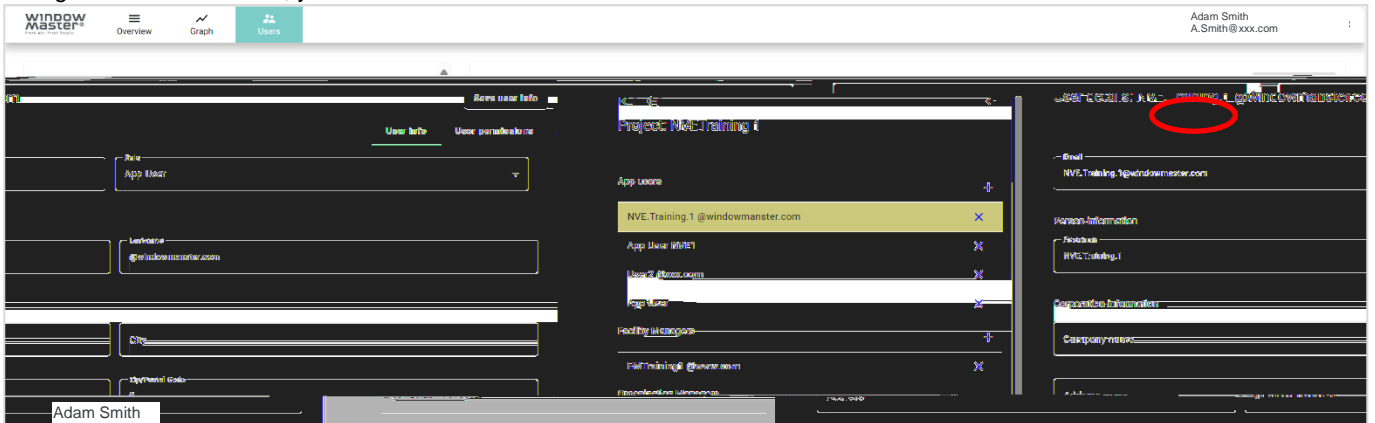
App to see the status of specific zones and operate specific windows

2.3.1 User accounts

On the left side of the screen, the upper part is for navigating to an existing Organization or a Project. The lower part includes the Users lists, which may include the Organization Managers list, the Facility Manager list, and the App users list.



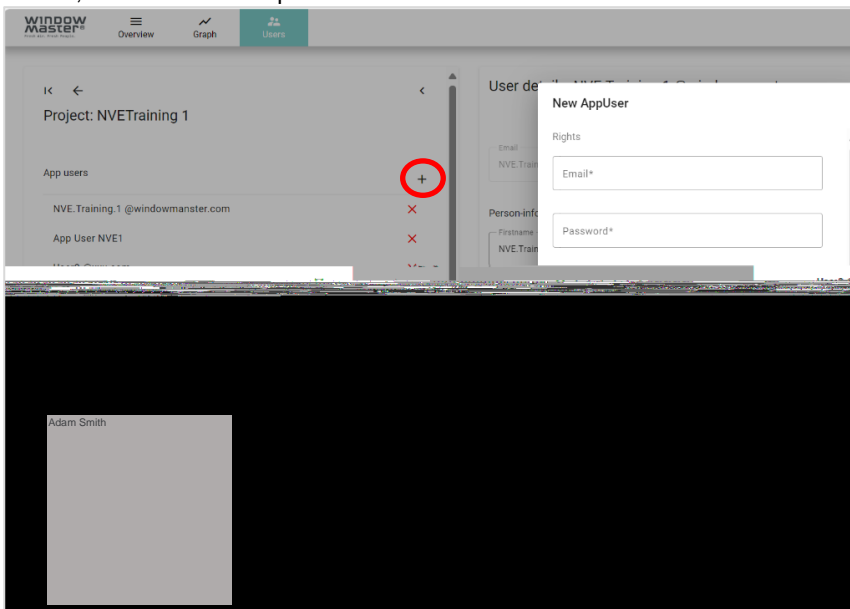
To manage a user account, navigate to the Organization/Project the user account belongs to, and select the specific user. On the right side of the screen, you can see and alter the User information.



To create a new User account, click the '+' icon in the App users list header, then insert the required info and save.

M N

Organization Managers, Facility Managers or App users list

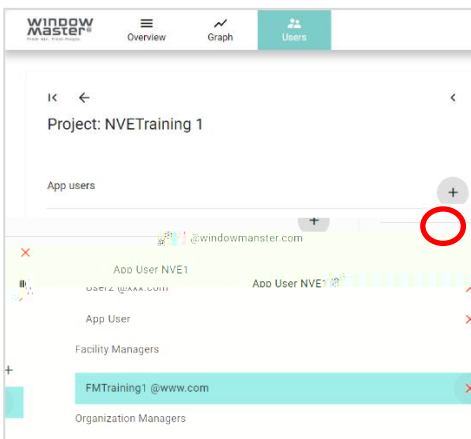


To delete a user, click the 'X' icon in the App users list header.

XN

M

delete. If the user is also associated with other projects or organizations, he/she will not be deleted from the system, just disassociated from the current project/organization.



2.3.2 Assigning permissions

To assign User permissions to see (Read) and/or manipulate (Write) specific zones and specific motor lines, through the mobile app, navigate to the zone you would like the User to have permissions to click the Read or Write permission for the zone and its Motor lines

