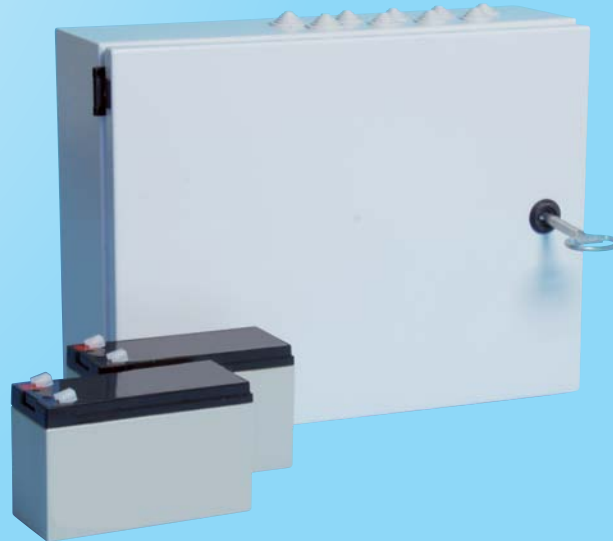
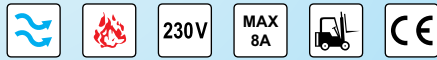


## WSC 308

## SMOKE CONTROL PANEL 8A



1.30

### Application

- 1 smoke / comfort ventilation group
- control of window actuators up to 8A
- with microprocessor
- smoke extraction and comfort ventilation in small or medium sized buildings
- expandable with additional modules
- incl. 2 emergency batteries

Smoke control panel for control of 24 VDC actuators for the function of smoke extraction combined with daily comfort ventilation.

The smoke control panel is especially suitable for surveillance of smaller areas, e.g. staircases, smaller sport centres and restaurants.

By linking of several smoke panels in a master/slave system, the smoke panel can also be used in larger buildings (master/slave module WSA 308 required).

### Special technical features

- for smoke ventilation combined with comfort ventilation
- built-in uninterruptible power supply (min. 72h battery back-up in case of voltage loss)
- cable surveillance on break glass unit
- cable surveillance on smoke detector input (if used)
- survey on actuator outlet
- breakage of smoke signal lines 1 and 2 are seen separately via diodes on the bottom plate
- fault display on diagnostic LEDs
- incident reporting is programmable as smoke triggering
- smoke triggering when temperature inside the compact unit exceeds 72°C
- grey steel housing for surface mounting
- IP54

### Connection options

- actuators with end switch or electronical load switch of
- tripping by BMS via potential-free contact (ASV module WSA 305 required)
- in connection with comfort ventilation signals from BMS units can be received
- wind-/rain sensor without additional plug in module
- 15 ventilation keypads with "indicator" or any number without "open" indicator
- 15 smoke detectors type WSA 300 61 or WSA 310
- 6 break glass unit (primary) type WSK 320 or type WSK 321
- 15 break glass unit (secondary) type WSK 330

**WSC 308**

# SMOKE CONTROL PANEL 8A

Technical specifications		
<b>Primary voltage</b>	230 VAC ±10%	
<b>Secondary voltage</b>	Max. open circuit voltage at 230 VAC Motor voltage at rated load Max. ripple	33.5 VDC 27.0 VDC 7.5 Vpp
<b>Output current</b>	max. 8A	
<b>Operating condition</b>	-5°C - +40°C	
<b>Emergency power supply</b>	> 72h	
<b>Material</b>	Steel housing for surface mounting	
<b>Colour</b>	Grey (RAL 7035)	
<b>Size</b>	400 x 300 x 120mm (W x H x D)	
<b>Weight</b>	10.0kg excl. batteries and 13.4kg incl. batteries	
<b>IP rating</b>	IP54	
<b>Delivery includes</b>	Smoke control panel with 2 pcs. back-up batteries 12V/7Ah (2 x WSA 007)	
<b>Spare parts</b>	See the spare part list on our web site <a href="http://www.windowmaster.uk">www.windowmaster.uk</a> under "Products"	
<b>Note</b>	We reserve the right to make technical changes	

Item	Item no.
Smoke control panel 8A	WSC 308

Accessories	Item no.
Linking of wind/rain signal	WSA 302
Time ventilation module	WSA 303
Gap ventilation module	WSA 304C
ASV module	WSA 305
Alarm and fault module	WSA 308
End Module	WSA 432
Smoke detector end module	WSA 435

**For further information, see the respective product sheets.**