



WSB 300 0010



WSB 300 0011



WSB 300 0012

WSB 300 0010 / 300 0011 / 300 0012

## Wing brackets for spindle actuators



Natural  
ventilation



Smoke  
ventilation

### Application

- bracket for spindle actuator type WMS 306 / 309 / 409
- up to max 1500N.

### WSB 300 0010

Bracket for fixing the pushrod to the window- or dome frame, as well as fixing of the spindle actuator with a bottom screw type WSB 300 0004.  
Supplied with bolt and retaining cotter pin.

### WSB 300 0011

Bracket for fixing the pushrod to the window- or dome frame.  
Supplied with bracket with fixing bolt.

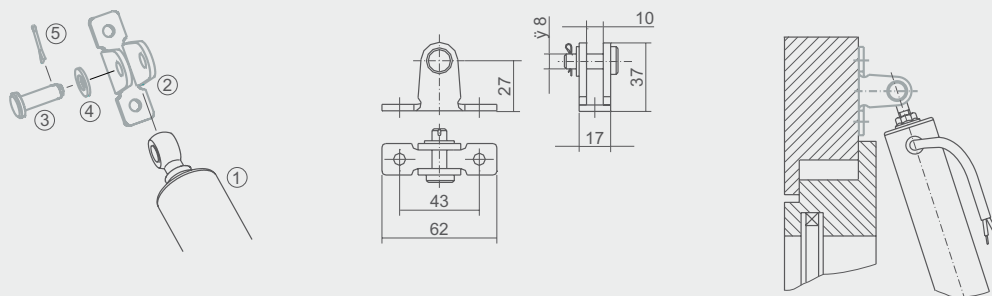
### WSB 300 0012

Bracket for fixing the pushrod to the window- or dome frame.  
Supplied with pin and retaining brace.

WSB 300 0010 / 300 0011 / 300 0012

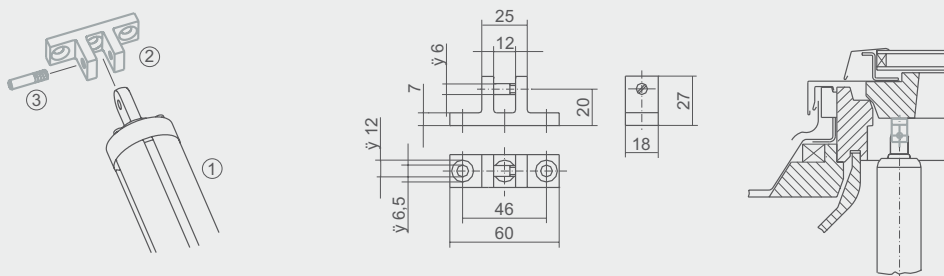
# Wing brackets for spindle actuators

## Installation suggestion – WSB 300 0010



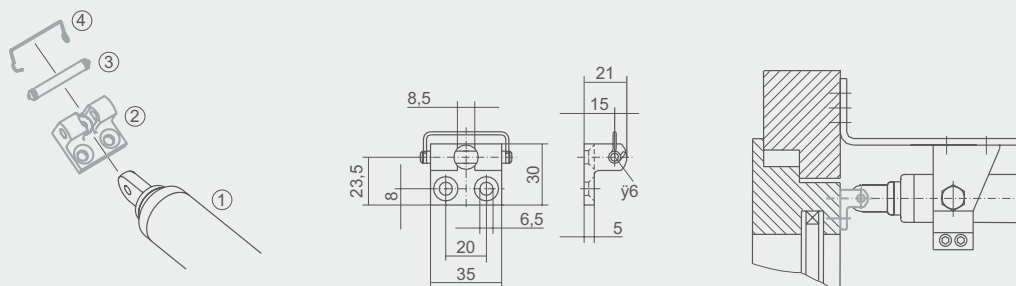
1. Spindle actuator 2. Bracket 3. Bolt 4. Washer 5. Pin

## Installation suggestion – WSB 300 0011



1. Spindle actuator 2. Bracket 3. Fixing bolt

## Installation suggestion – WSB 300 0012



1. Spindle actuator 2. Bracket 3. Pin 4. Safety bracket

Items	Item no.
Bracket with bolt and retaining cotter pin	WSB 300 0010
Bracket with fixing bolt	WSB 300 0011
Bracket with pin and retaining bracket	WSB 300 0012